

AUTO LENSMETER
GL-8800UP
GL-7700

HAVING THE GREAT FEATURES AS IT IS

Strong Measurement

Dark Sunglass Lens can be measured as ever.

Easier replacement of Marking Cartridge with White Color

White Color Marking can be seen even on the dark color lens with the water resistance coating. Then, it allows Auto Blocker to recognize it as the light does not go through much.

Specification	
Refraction Measurement	Sphere $-25 \sim +25\text{D}$ (0.01/0.12/0.25D Step)
	Cylinder $0 \sim \pm 10\text{D}$ (0.01/0.12/0.25D Step)
	Axis angle (A) $0 \sim 180^\circ$ (1° Step)
	Addition $0 \sim \pm 10\text{D}$ (0.01/0.12/0.25D Step)
	ADD1, ADD2
Wavelength	Prism $0 \sim 10\Delta$ (0.01/0.12/0.25 Δ Step)
	Measurement Light 525nm (Green)
UV Measurement	UV Light 375nm (UV-A) (GL-8800UP)
PD Measurement	0~100% 5% Step (GL-8800UP)
Lens	45~85mm 0.5mm Step (GL-8800UP)
Lens Size	Glasses Lens, Hard/Soft Contact Lens
Monitor	Max ϕ 100mm
	5.7inch TFT VGA (640 \times 480) Color LCD
Marking Cartridge	Tilt Max80°
Printer	White
Overall Dimension	Thermal printer with Automatic Cutter (Width 58mm)
Weight	(W) 172mm \times (D) 222mm \times (H) 332mm
Output	4.2kg (GL-8800UP) 4.1kg (GL-7700)
Rated Voltage	RS232C Interface 9 pin
Consumption	100~240V 50/60Hz
	40VA

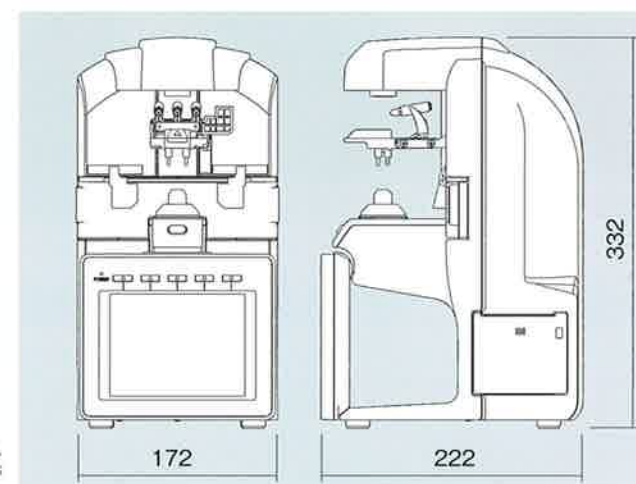
Single Step Fixation of Lens Plate

Lens Plate can be moved and stopped at any position without touching any lever. It allows to measure the up and the down prism on right and left more precisely than ever.

Accessories

- Power cable ● Printer paper ● Contact Lens Holder ● Dust cover
- Operation Manual

Overall Dimension



- Specifications and design are subject to change without prior notice for improvement.
- The part of screen is composed photograph.
- The color of instrument on the catalogue and the real product might be different.
- We judge that the LCD Monitor is qualified if the total "lit pixel" and/or "missing pixel" is less than five (excluding non-sharp one and less than half one).

CAUTION For the proper and safety use, please read the Instruction Manual thoroughly before using the product.

● Agency

Rexxam
Rexxam Co., Ltd.
958 Ikeuchi, Konan-cho, Takamatsu, Kagawa 761-1494 Japan

SHIGIYA
SHIGIYA MACHINERY WORKS LTD.
GS Division <http://www.GrandSeiko.com>
5378 Minoshima, Fukuyama, Hiroshima, 721-8575 Japan
Tel. +81-84-981-5735 Fax. +81-84-953-6758

UV and PD Measurement,* Green Measurement LED
Keeping the ergonomic design, it's evolved further with the compact design!

*GL-8800UP only

AUTO LENSMETER

GL-8800UP
GL-7700

NEW



Grand Seiko.com

MORE ADVANCED FEATURES IN 50% LESS SIZE^{*}

^{*}compare to our previous model

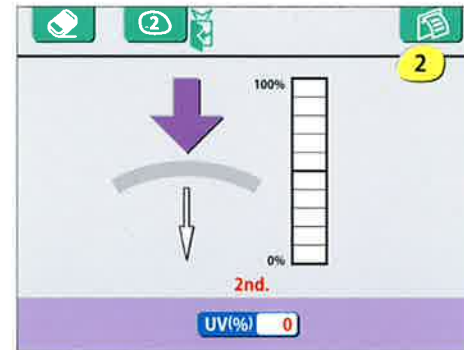
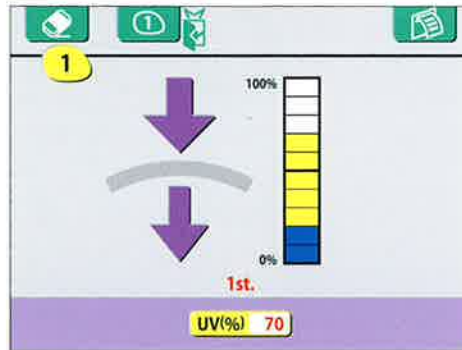
AUTO LENSMETER
GL-8800UP
GL-7700

NEW UV Measurement

Able to measure the UV-A (375nm) that is harmful to the human eye in 5% step and display it. By just pressing the switch, one can compare the 2 lenses. With this feature, it allows to explain easily the difference of UV transmittance between the old and the new lens.
(GL-8800UP only)



※UV light is not actually visible.



NEW PD Measurement

PD Measurement feature is added newly. Left and right PD as well as total PD can be measured precisely in 0.5mm step.
(GL-8800UP only)



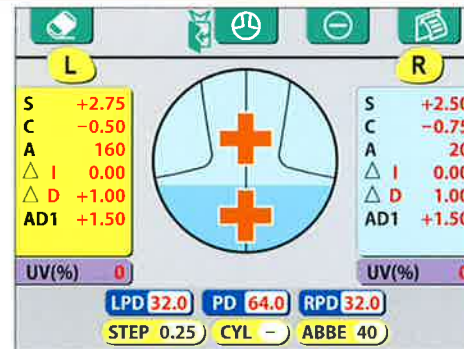
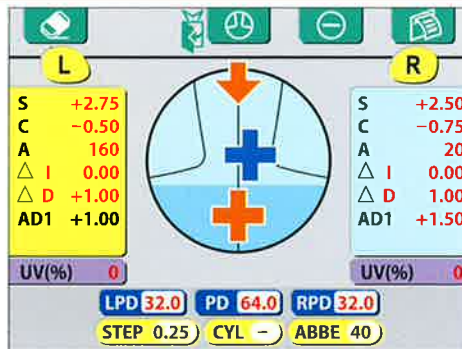
NEW Green Measurement LED

Measurement light is now changed to GREEN with the wavelength of 525nm as it is being improved. It allows measuring of the normal index to the high index precisely without changing Abbe.



Advanced Progressive Lens Measurement

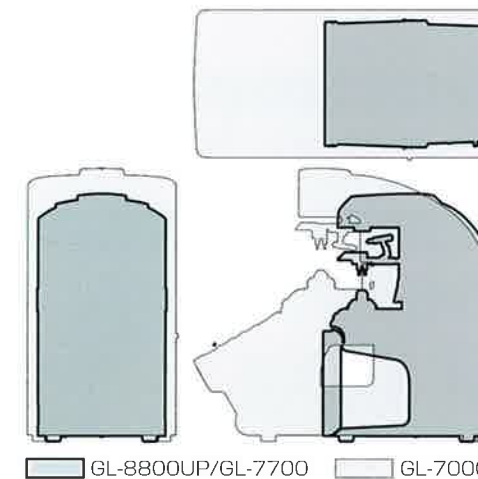
As before, it can recognize the progressive lens automatically and go into the progressive lens measurement mode. In addition, with the advanced measurement logic, it guides to the precise near point that makes the measurement much easier.



NEW Compact Size

Less than half of our previous model.

Table top size is 50% less and weight is 30% less. It can be placed in the sales area and one can measure the old glasses of client while they are choosing a new frame.



Throw in Printer

Faster printing speed with easier setting of the printer paper. Just put the printer paper and close the door. There is no need to set it precisely.

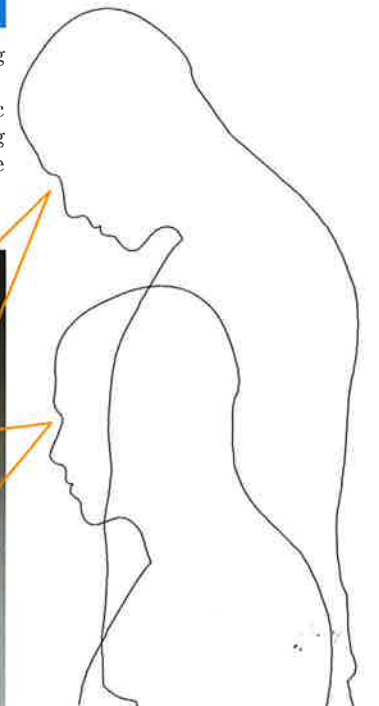
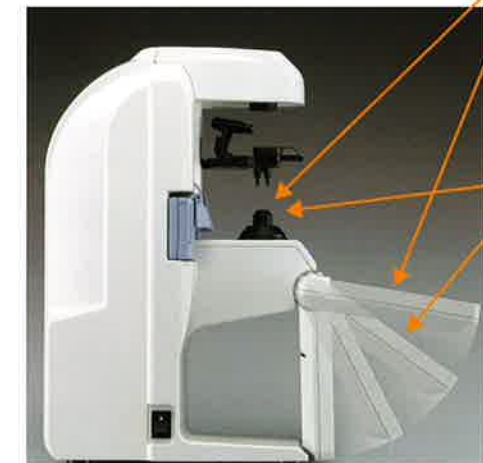
2014 10 01 12:00			
Name GrandSeiko.com		Registered user name, comments, etc (Registered Only)	
<R>		<L>	
+2.50	SPH	+2.75	
-0.75	CYL	-0.50	
20	A X	160	
1 0.00	PSN	1 0.00	
D 2.25		D 2.00	
+1.50	ADD	+1.50	
0	U V	0	
P D		Right PD, Left PD	
32.0	64.0	32.0	
GrandSeiko.com		Serial number	
GL-8800UP S/N:840001L			

※UV and PD measurements are only on GL-8800UP.

NEW Tiltable LCD with Switch Panel

Much higher resolution with the tilting feature.

Taking a step forward to the ergonomic design, it can be now used both in standing and seating position comfortably with the limited movement of visual line.



Connection with GS Remote Vision RV-II

It can be connected with our GS Remote Vision RV-II to systemize the measurement data of client.



AUTO REF/ KERATOMETER

GR-3500KA
GR-3300K
GR-2200
GR-3100K
GR-2100
WR-5100K
WAM-5500

GS Remote Vision RV-II

LCD VISION CHART GV-900

